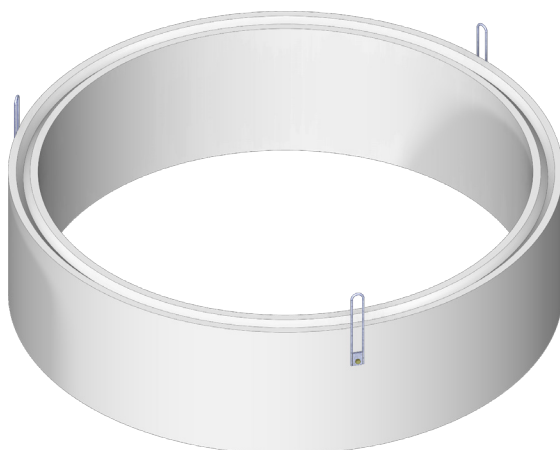


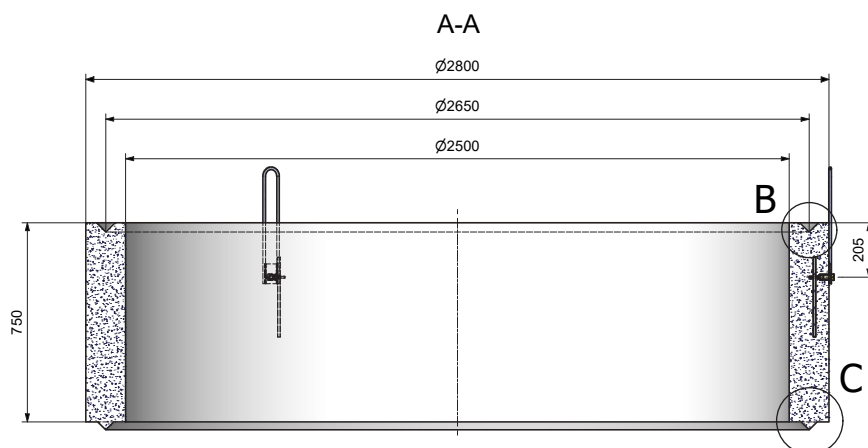
BUSE DE PUITS PLEINE A EMB. Ø Int. 2,50 m Haut. 0,75 m



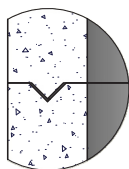
Code Article : 460925

Poids : 2270 Kg

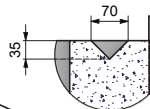
**POSE EXCLUSIVE
EN SOL**



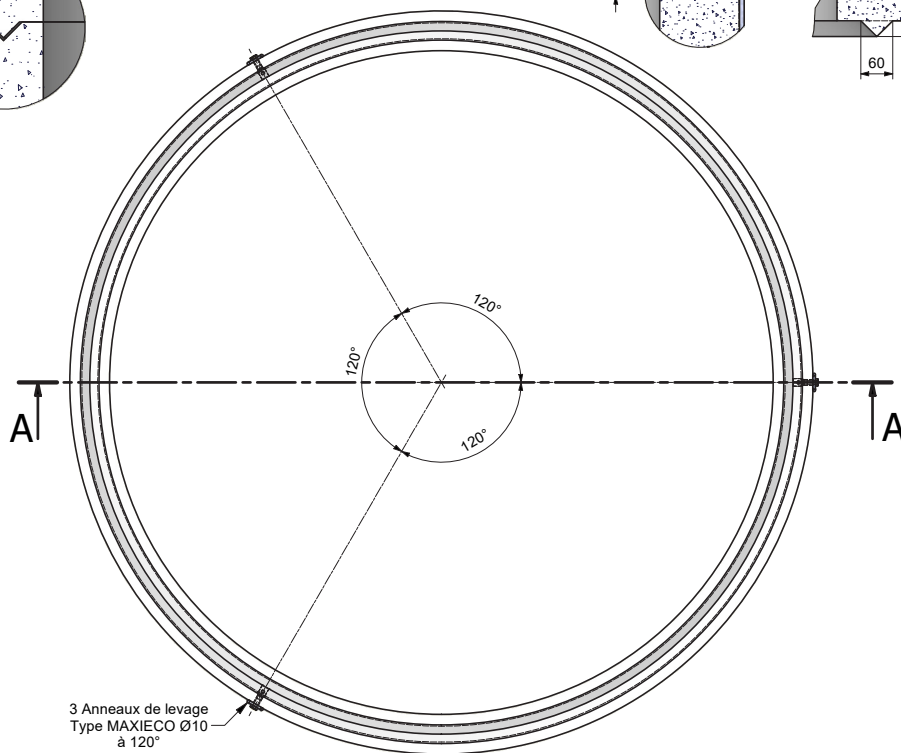
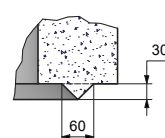
Détail emboîtures



Détail de B



Détail de C



N.B. : Le transport de ces buses nécessite un convoi exceptionnel, merci de nous contacter.