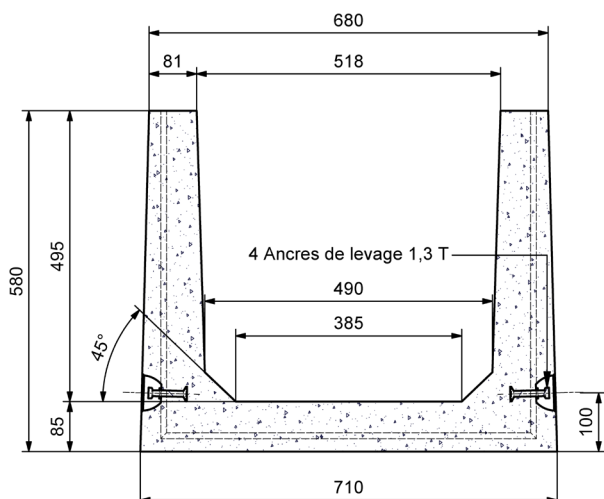


CANIVEAU TECHNIQUE 50x50 Long.2,50 m

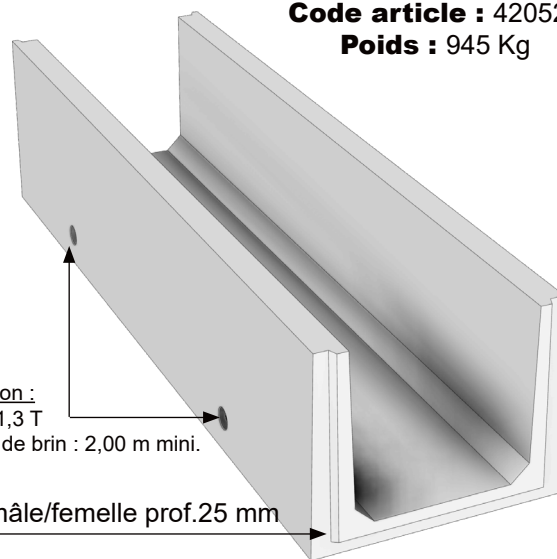
A EMBOITEMENTS



Code article : 420524
Poids : 945 Kg

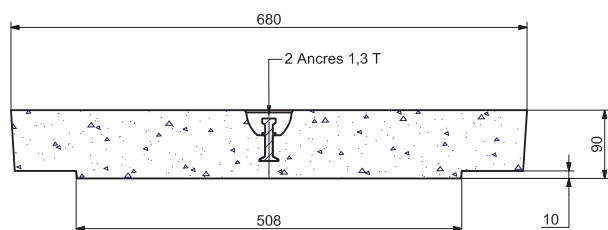
Manutention :
4 Ancres 1,3 T
Longueur de brin : 2,00 m mini.

Emboîtements mâle/femelle prof.25 mm

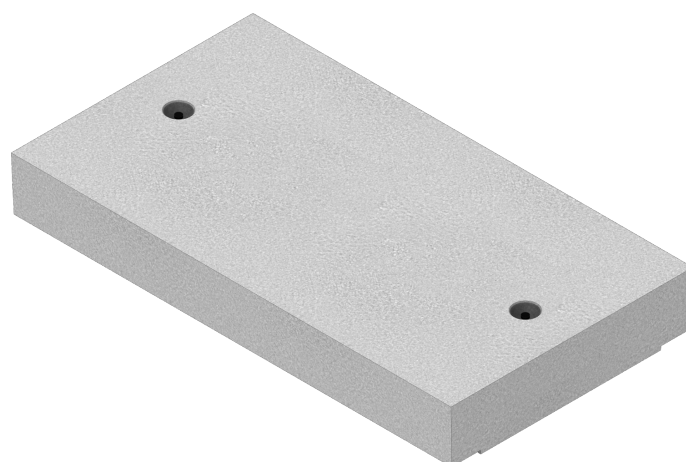
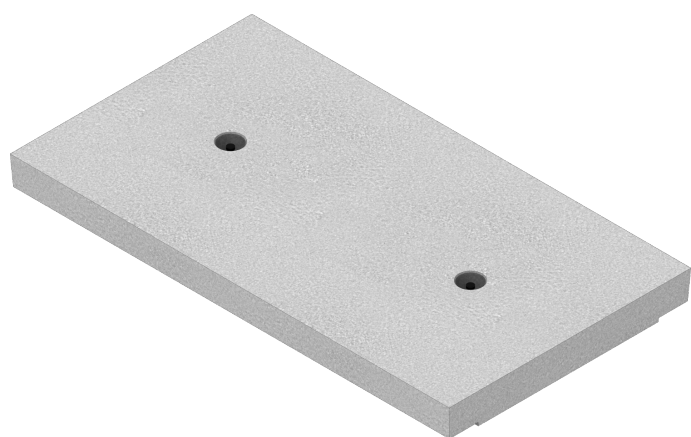
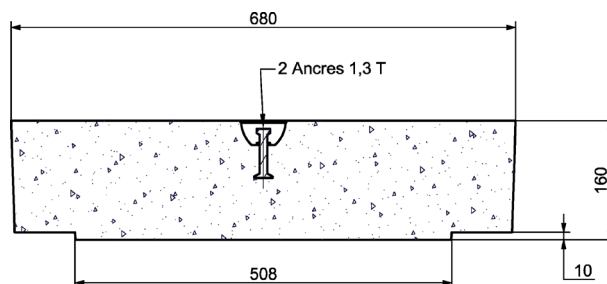


DESSUS PLEINS :

Dessus 1,25 x 0,68 m Ep : 8 cm
Classe B125
Code article : 420526
Poids : 183 Kg



Dessus 1,25 x 0,68 m Ep : 15 cm
Classe C250
Code article : 420527
Poids : 265 Kg



THE BAULT
L'EXPÉRIENCE CONSTRUCTIVE



Version 6 - Le 09/07/2025