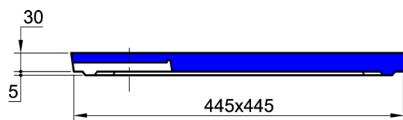


# BOITE PLUVIALE Int. 40x40

## A JOINTS



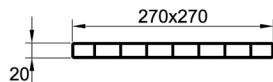
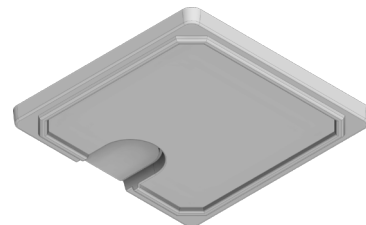
### COUVERCLE ARME

Code article : 244041

Poids : 14 Kg

Conditionnement : 12 / palette

Poids palette : 168 Kg

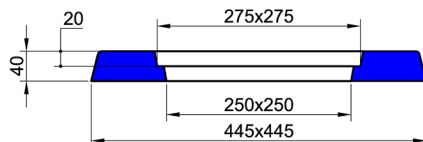
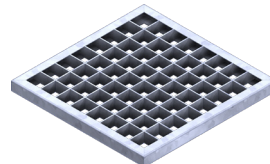


### GRILLE GALVA. 27x27 MAILLES 3x3

Code article : 010038

Poids : 1,2 Kg

Conditionnement : Unité

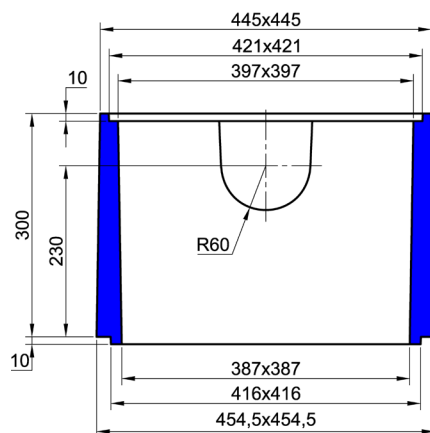
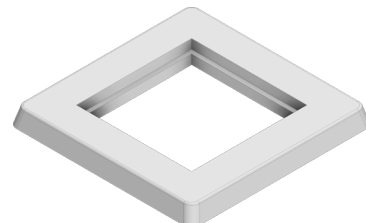


### CADRE BETON SANS GRILLE

Code article : 244094

Poids : 9 Kg

Conditionnement : Unité



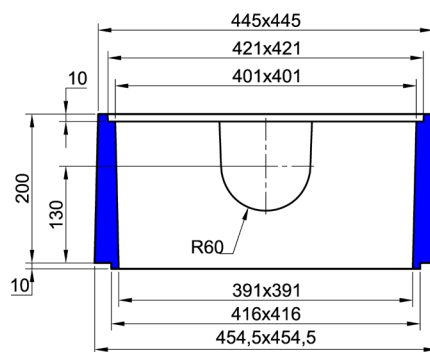
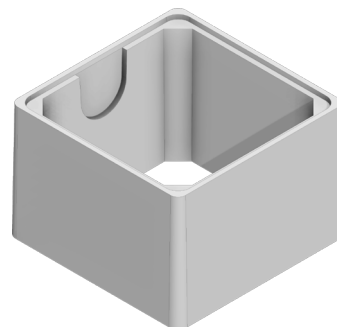
### REHAUSSE H : 30

Code article : 244045

Poids : 34 Kg

Conditionnement : 12 / palette

Poids palette : 408 Kg



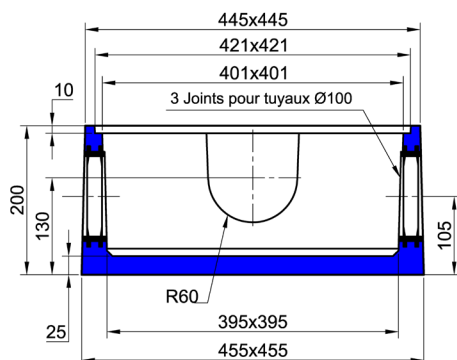
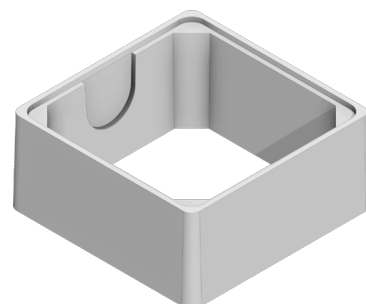
### REHAUSSE H : 20

Code article : 244042

Poids : 22 Kg

Conditionnement : 12 / palette

Poids palette : 264 Kg



### BOITE PLUVIALE Int. 40x40 A JOINTS

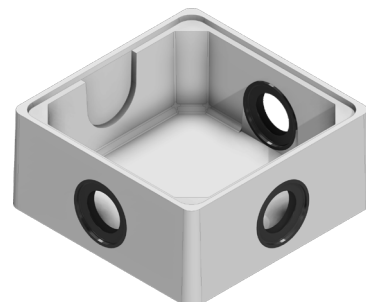
Code article : 244040

Poids : 28 Kg

Conditionnement :

6 (sans couvercles) / palette

Poids palette : 168 Kg



**THE BAULT**  
L'EXPÉRIENCE CONSTRUCTIVE



Adresses sur [quefairedemesdechets.fr](http://quefairedemesdechets.fr)

Version du 29/07/2024